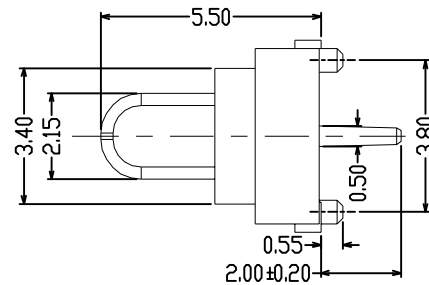
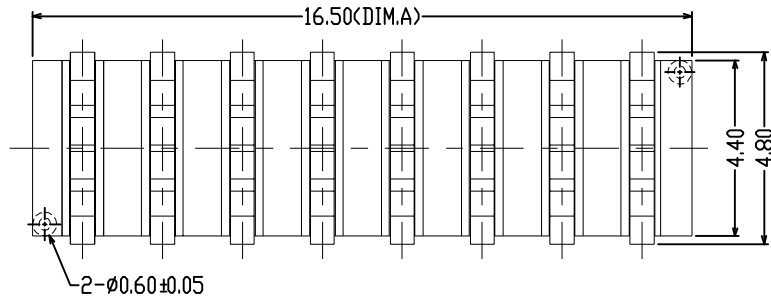
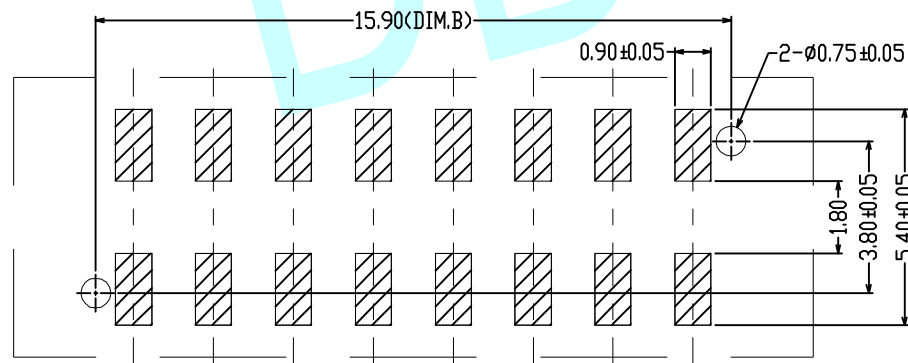
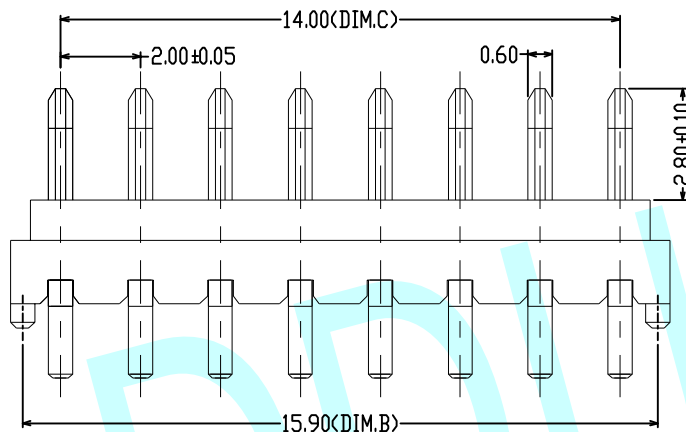


ROHS



NOTES;

1. 额定电压: AC/DC 30V max
2. 绝缘耐压: AC 1000V 1MINUTE无损伤
3. 绝缘电阻: DC 500V 1MINUTE, 1000MΩ min
4. 材质: 塑胶LCP130I, 五金件C2680R-H镀金
5. 操作温度: -20℃~+80℃



PCB LAYOUT
TOLERANCE: ±0.05

Pin	DIM. A	DIM. B	DIM. C
2P	4.50	3.90	2.00
3P	6.50	5.90	4.00
4P	8.50	7.90	6.00
5P	10.50	9.90	8.00
6P	12.50	11.90	10.00
7P	14.50	13.90	12.00
8P	16.50	15.90	14.00
9P	18.50	17.90	16.00
10P	20.50	19.90	18.00

APPROVALS		DATE	http://www.dongdudz.com	
DRAW:	ZRD	2017-12-6	TOLERANCE:	ANGLE:
CHECKED:	***	****	30≥	±0.30
APPOVALS:	***	****	10~30	±0.20
			5~10	±0.15
			≤5	±0.10

® 东都电子
DONGDU ELECTRONICS

MODEL: BATTERY

PART NO: DDU-3P-2.0-G

UNIT :mm SCALE: 1:1

REV: A