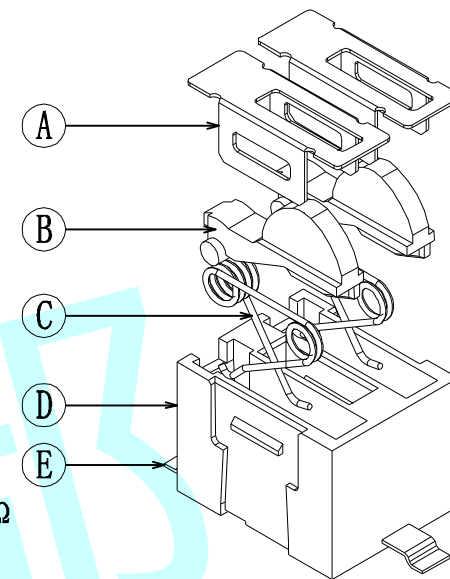
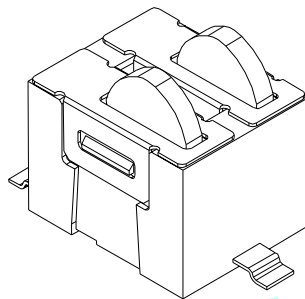
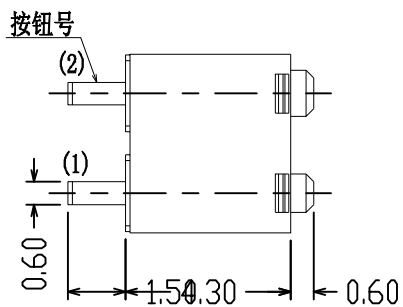
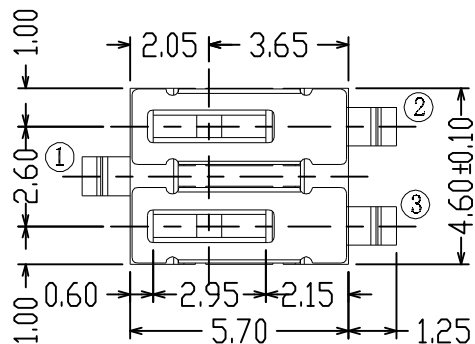
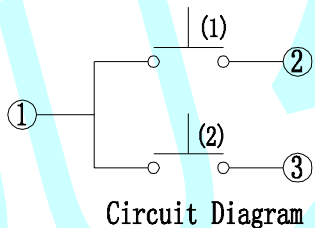
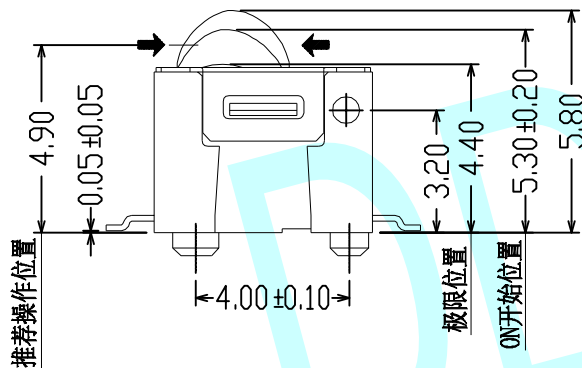


ROHS

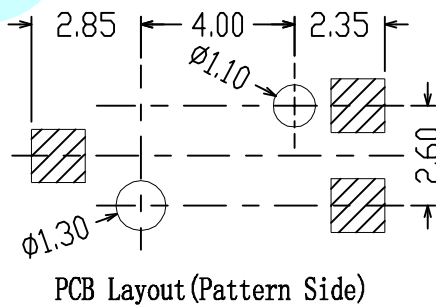
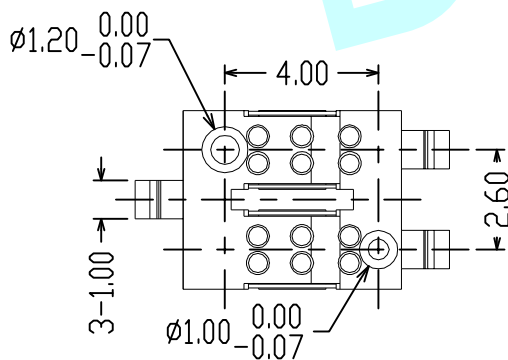


动作方向



NOTE:

1. Rated load: DC 3~5V 0.05~10mA
2. Insulation resistance: $\geq 100M\Omega$
3. Contact resistance: $\leq 1\Omega$
4. Withstand voltage: AC 100V 50Hz/1min
5. Electrical life: 500,00 cycles
6. Ambient temperature: $-10^{\circ}C \sim +60^{\circ}C$
7. Relative humidity: $40^{\circ}C \leq 95\%$
8. Contact stroke: 0.50 ± 0.20
9. Action force: $\leq 0.25N(26gf)$



序号	名称	数量	材料	备注
E	接触脚	3	黄铜	镀银
D	底座	1	LCP	
C	弹簧	2	磷铜丝	镀银
B	手柄	2	PA	
A	盖子	2	不锈钢	

APPROVALS		DATE	http://www.dongdudz.com			
DRAW:	ZRD	2017-12-6	TOLERANCE:	ANGLE:		
CHECKED:	***	****	30 \geq	± 0.30		
APPOVALS:	***	****	10 \sim 30	± 0.20		
			5 \sim 10	± 0.15		
			≤ 5	± 0.10		
			东都电子 DONGDU ELECTRONICS			
					MODEL:	DETECTOR SWITCHS
					PART NO:	DDU-16502
					UNIT :mm	SCALE: 1:1
			REV:	A		



MODEL:	DETECTOR SWITCHS
PART NO:	DDU-16502
UNIT :mm	SCALE: 1:1
REV:	A