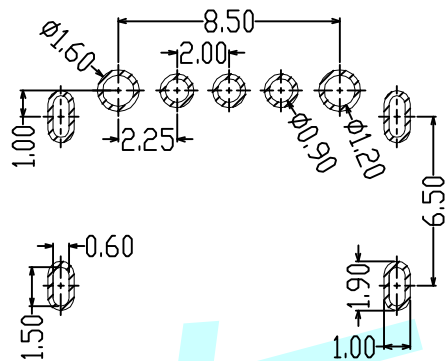
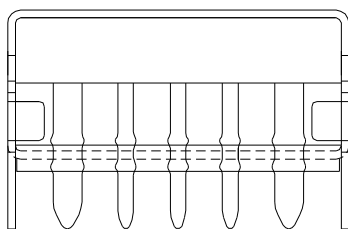
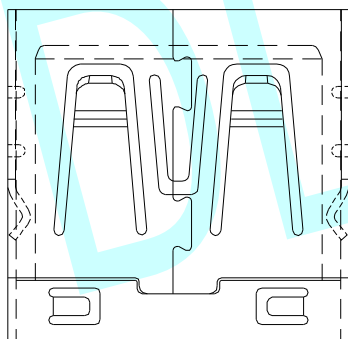
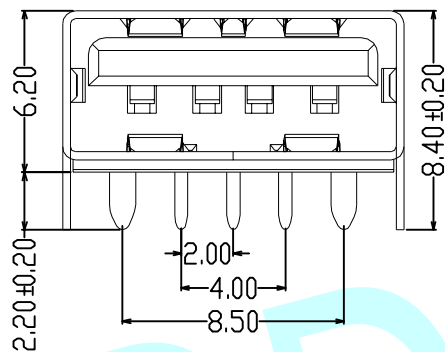
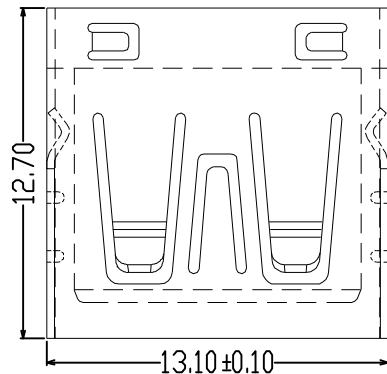
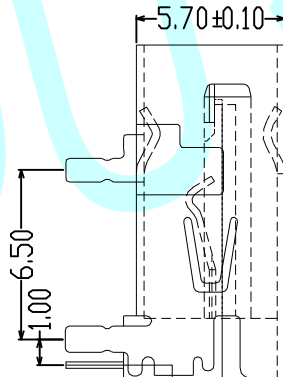


**ROHS**



PCB LAYOUT



**Specifications:**

**A. Electrical:**

1. Current rating: 5A/contact terminal
2. Voltage rating: 30V DC
3. Contact resistance: 30mΩ MAX
4. Dielectric withstanding voltage: 300V AC AT Sea Level
5. Insulation resistance: 1000MΩ MIN

**B. Mechanical:**


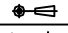
1. Connector mate and unmate force:
  - Mate force: 3.0kgf (MAX)
  - Unmate force: 0.7kgf (MIN)
2. Terminal retention: 1.2kgf MIN

**C. Material:**

1. Housing:
  - Hing temperature thernaplastics, UL94 V-0 PA66 gREEN/rED
2. Contact copper alloy C2680

**D. Finish:**

1. Contact: plated gold in mating area; Tin on solder tails
2. Shell: Nickel plating

APPROVALS		DATE	http://www.dongdudz.com	
DRAW:	ZRD	2017-12-6	TOLERANCE:	ANGLE:
CHECKED:	***	***	30° ≥ ±0.30	±2°
APPOVALS:	***	***	10°~30 ±0.20	
			5°~10 ±0.15	
			≤5 ±0.10	
			 <b>® 东都电子</b> DONGDU ELECTRONICS	
MODEL:		USB CONNECTOR		
PART NO:		USB-AP-5P		
UNIT :mm	SCALE: 1:1			
REV:	A	PAGE: 1/1		