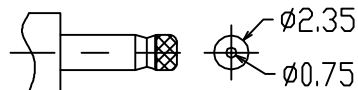
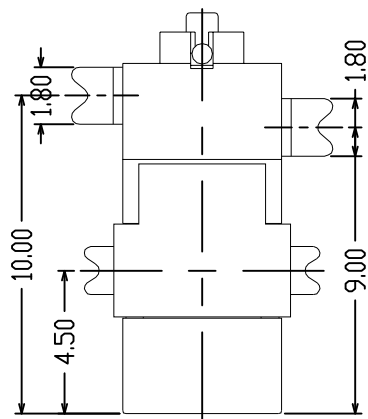
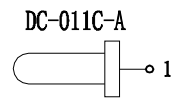


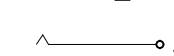
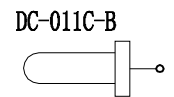
ROHS



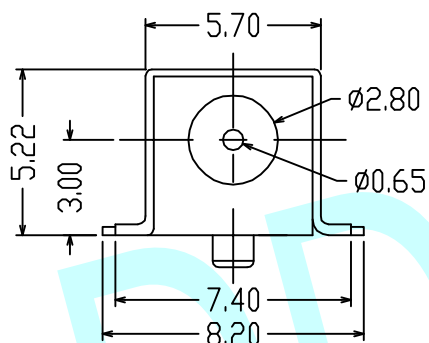
DC MATE PLUG



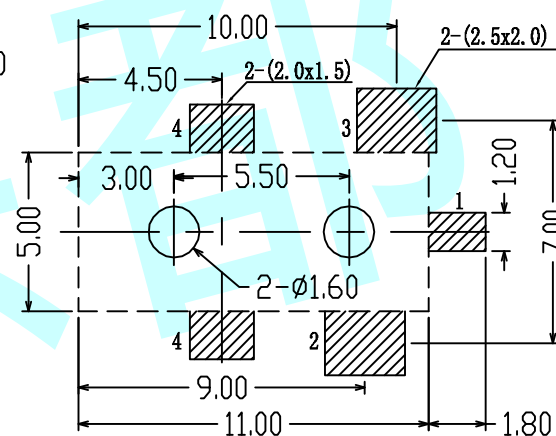
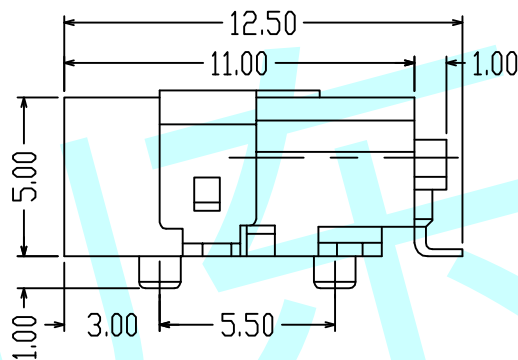
CIRCUIT DIAGRAM



CIRCUIT DIAGRAM

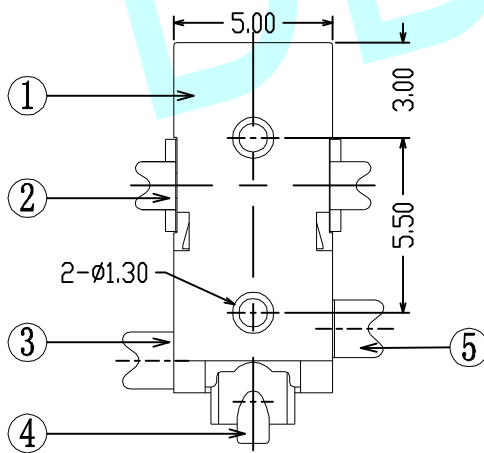


PCB Layout (Copper-Side View)



NOTE:

1. Rating: 0.5A 30V DC
2. Operating temperature: -30°C~70°C
3. Contact resistance: $\leq 30m\Omega$
4. Insulation resistance: $\geq 100M\Omega$ DC 250V
5. Withstand voltage: AC 250V(50Hz) 1min
6. Operating force: 3-20N
7. Operating Life: 5,000cycles



5	CONTACT	1	Mn(Y) T=0.25mm	D. L1Ag
4	Pin	1	H65 $\phi 0.65mm$	D. L1Ag
3	CONTACT FOOT	1	H62(Y) T=0.30mm	D. L1Ag
2	CONTACT FOOT	1	H62(Y) T=0.30mm	D. L1Ag
1	BASE	1	PPA	BLACK
NO.	PART NAME	Q' TY	MATERIAL	REMARK

APPROVALS		DATE	http://www.dongdudz.com	
DRAW:	ZRD	2017-12-6	TOLERANCE:	ANGLE:
CHECKED:	***	***	30 \geq	± 0.30
APPOVALS:	***	***	10 \sim 30	± 0.20
			5 \sim 10	± 0.15
			≤ 5	± 0.10
				$\pm 2^\circ$



MODEL:	DC POWER JACK	
PART NO:	DC-011C	
UNIT :mm	SCALE: 1:1	
REV:	A	PAGE: 1/1