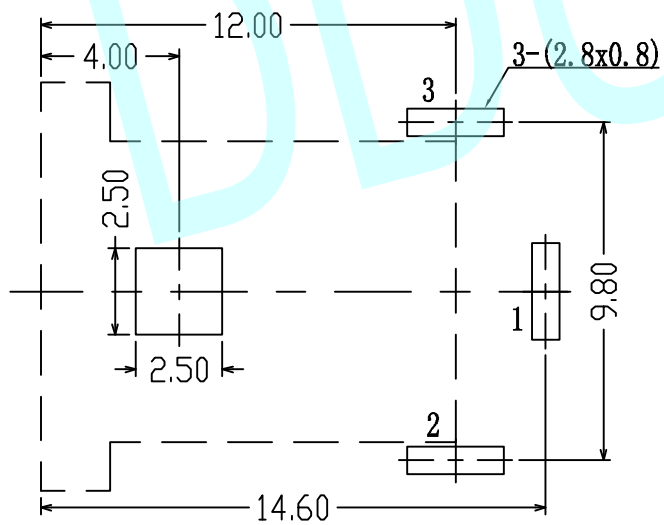
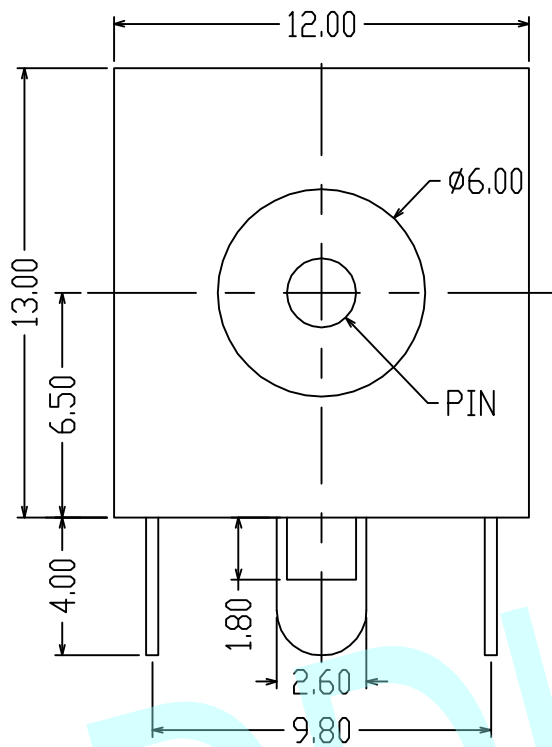
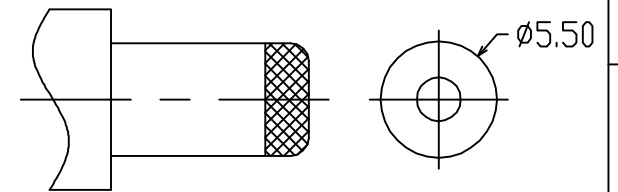
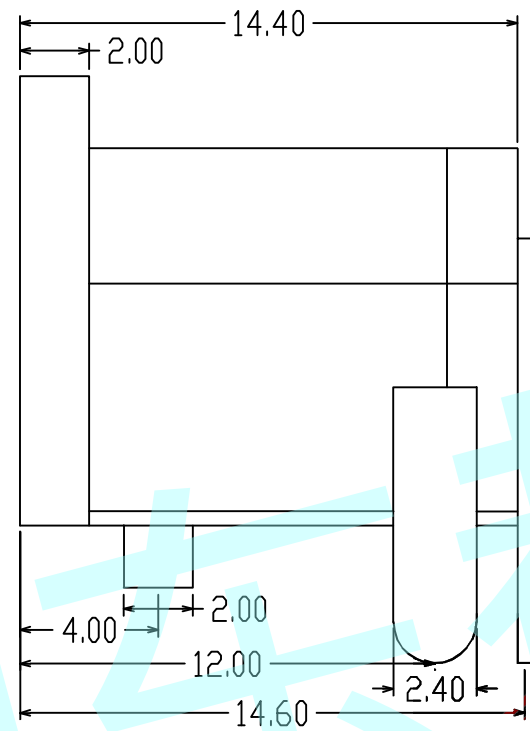


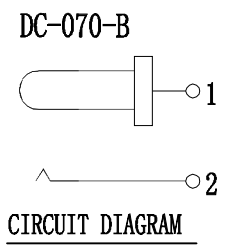
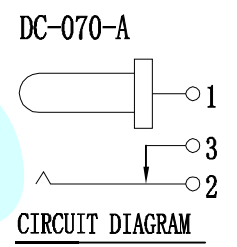
**ROHS**



PCB Layout (Copper-Side View)



**DC MATE PLUG**



- NOTES:
1. Rating: 0.5A 30V DC
  2. Contact Resistance: 100mΩ Max
  3. Operating temperature: -20°C~70°C
  4. Operating force: 3-20N
  5. Operating Life: 5,000 cycles

		PIN		ø2.00	ø2.50
APPROVALS		DATE		http://www.dongdudz.com	
DRAW:	ZRD	2017-12-6		TOLERANCE:	ANGLE:
CHECKED:	***	***		30≥ ±0.30	±2°
APPOVALS:	***	***		10~30 ±0.20	
				5~10 ±0.15	
				≤5 ±0.10	
				MODEL:	DC POWER JACK
				PART NO:	DC-070
				UNIT :mm	SCALE:1:1
				REV:	A
				PAGE:1/1	



东都电子  
DONGDU ELECTRONICS