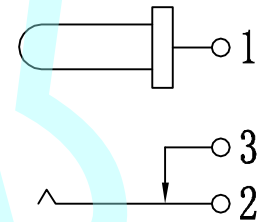
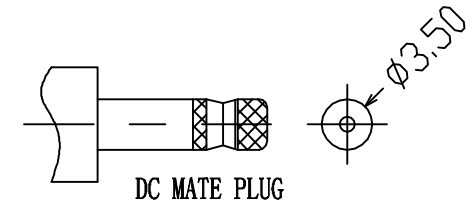
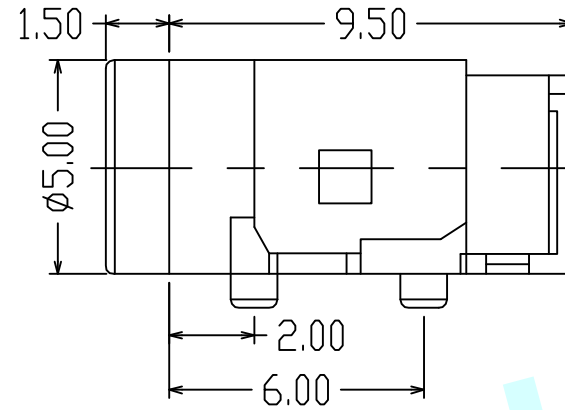
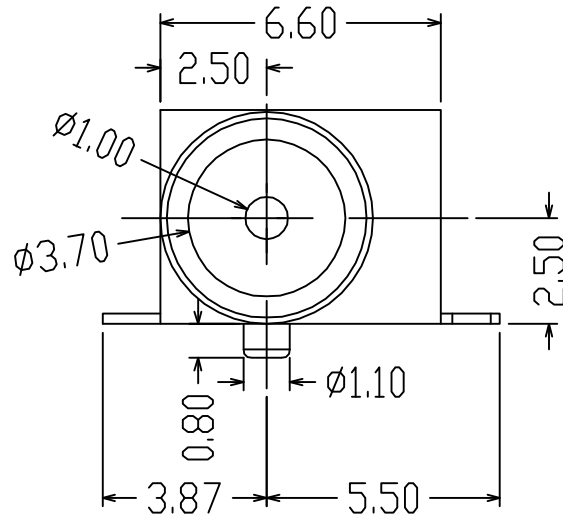
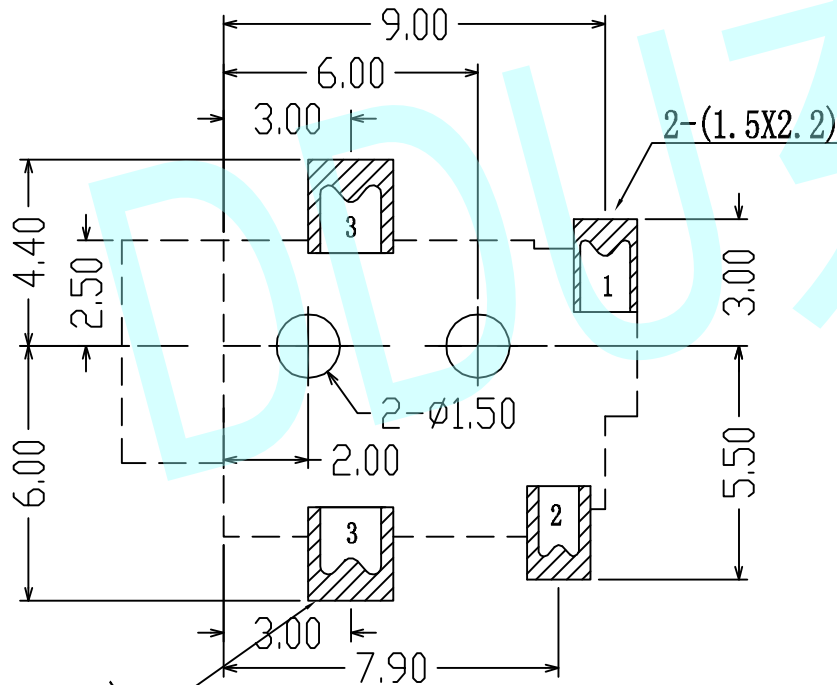


ROHS





CIRCUIT DIAGRAM



PCB Layout (Copper-Side View)

NOTES:

1. Rating: 0.5A 30V DC
2. Contact Resistance: 100mΩ Max
3. Operating temperature: -20°C ~ 70°C
4. Operating force: 3-20N
5. Operating Life: 5,000 cycles

APPROVALS		DATE	http://www.dongdudz.com	
DRAW:	ZRD	2017-12-6	TOLERANCE:	ANGLE:
CHECKED:	***	***	30 [≥]	±2°
APPOVALS:	***	***	10 [~] 30	
			5 [~] 10	
			≤5	
			 东都电子 DONGDU ELECTRONICS	
MODEL:		DC POWER JACK		
PART NO:		DC-031A		
UNIT : mm	SCALE: 1:1			
REV:	A	PAGE: 1/1		