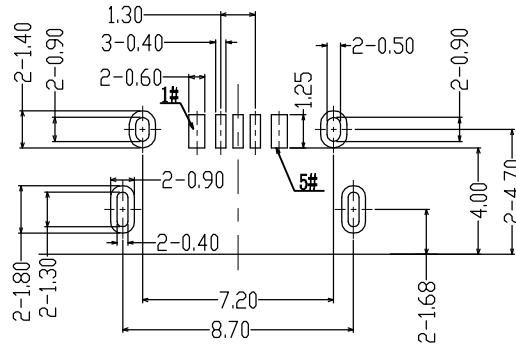
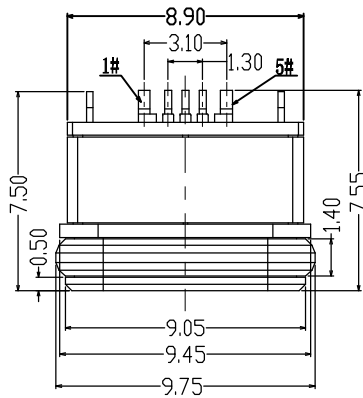
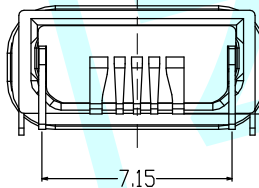
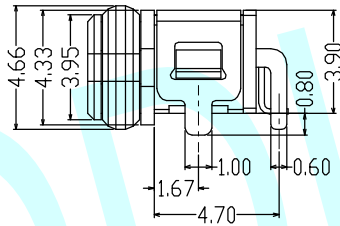
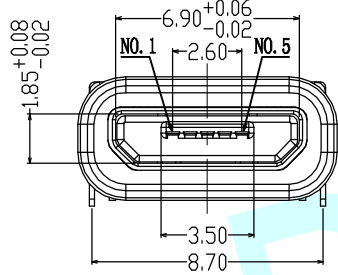


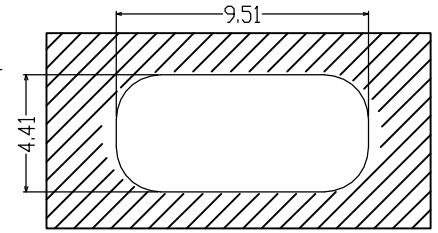
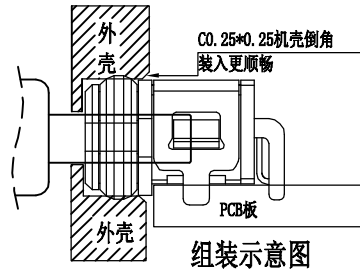
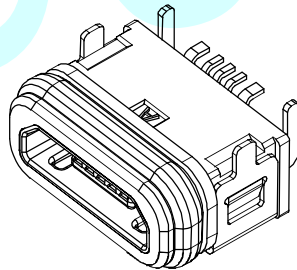
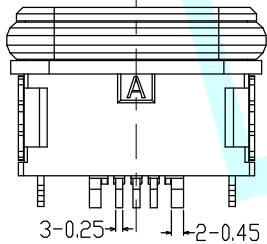
ROHS



RECOMMENDED P.C.B. LAYOUT (TOP VIEW)
GENERAL TOLERANCE: ±0.05



0.10
ALL SOLDER TAILS



因防水圈走上公差，
建议开槽尺寸
单边放大0.23mm

SPECIFICATIONS:

1. ELECTRICAL CHARACTERISTICS:
 - 1.1. RATING: 3A;
 - 1.2. CONTACT RESISTANCE: 30mΩ MAX. (INITIAL);
 - 1.3. DIELECTRIC WITHSTANDING: 100V AC MIN.;
 - 1.4. INSULATION RESISTANCE: 100MΩ MIN.;
2. DURABILITY: 5,000 CYCLES MIN.;
3. INSERTION FORCE: 5-20N;
4. EXTRACTION FORCE: 6-20N;
5. WATER PROOFNESS: THIS PRODUCT IS BASED ON IPX8.
6. PLUG INTERFACE DIMENSIONS COMFORM TO USB2.0 SPEC.
7. PACKAGING: TAPE & REEL.

Contact Number	Signal Name	Remarks
1#	VBUS	Power
2#	D-	Date-
3#	D+	Date+
4#	ID	Reserve or Gound
5#	GND	Gound

3	Shell1/2	2	Ni Plating
2	Contact	5	Phosphor bronze Au/Ni Plating T=0.20mm
1	Housing	1	PA10T (G.F30%)
ITEM	PART NAME	Q' TY	FINISH

APPROVALS		DATE	http://www.dongdudz.com	
DRAW:	ZRD	2017-12-6	TOLERANCE:	ANGLE:
CHECKED:	***	***	30≥ ±0.30	±2°
APPOVALS:	***	***	10~30 ±0.20	
			5~10 ±0.15	
			≤5 ±0.10	

MODEL: USB CONNECTOR
PART NO: MICRO USB-IPX8-6P
UNIT :mm SCALE:1:1
REV: A PAGE:1/1