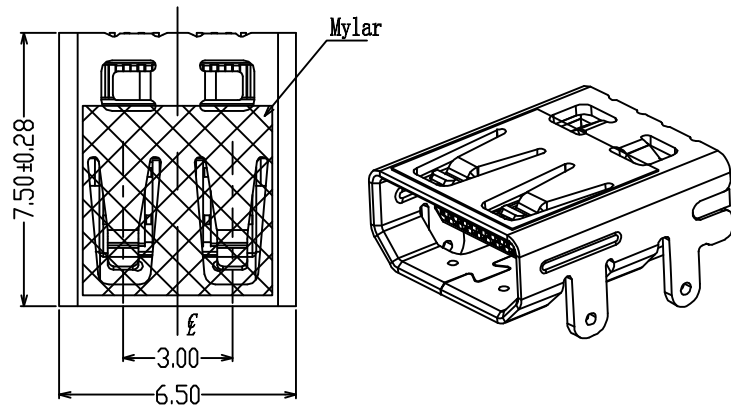
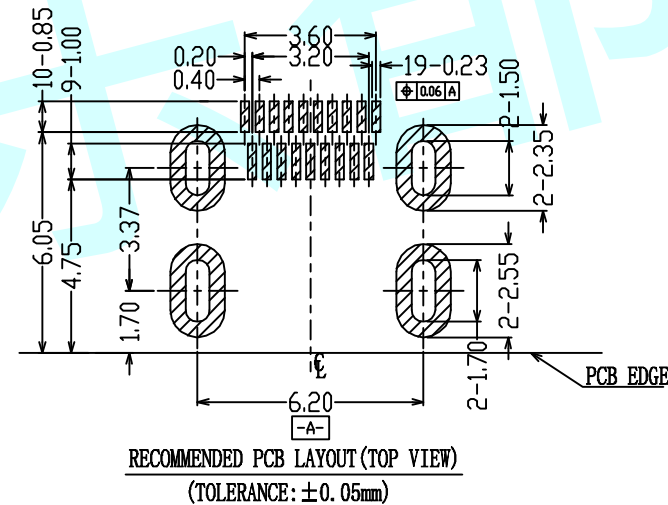
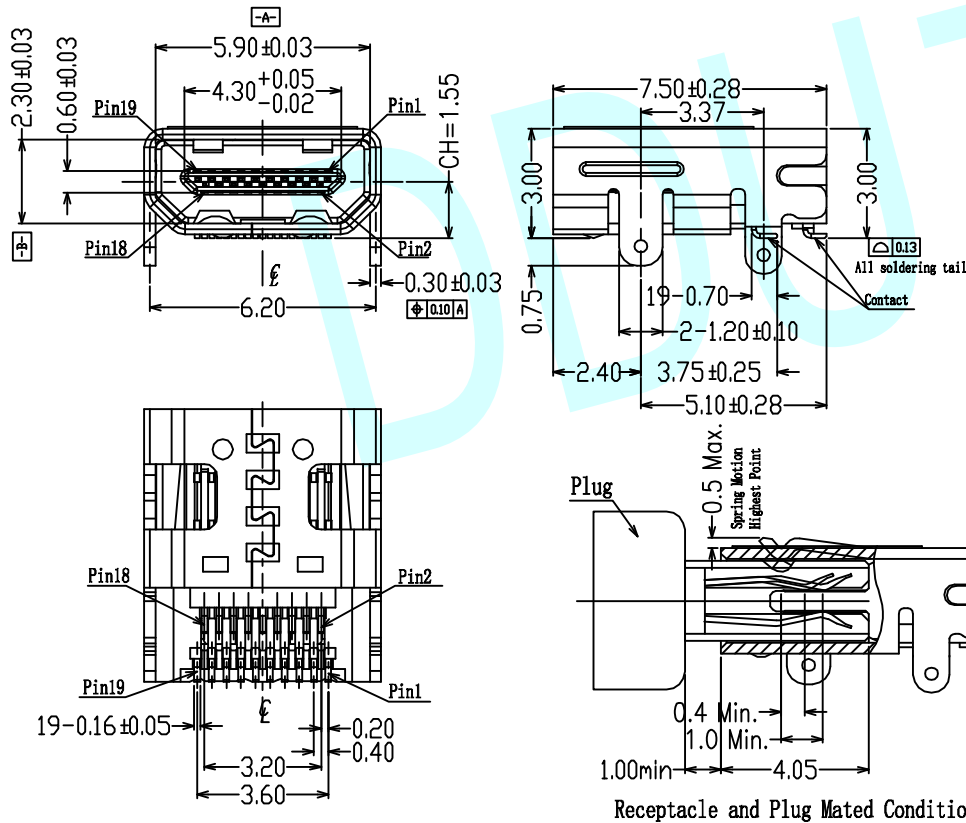


ROHS




Notes:

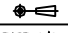
1. Materials
 - a. Housing: LCP+30% G/F, Black, UL94 V-0;
 - b. Contact: Phosphor Copper (C5191), Gold 0.8-15U* Plating at mating area, Matte Tin or Au Plating at solder tail, all over Nickel;
 - c. Shell: Brass or Phosphor Copper (C5191);
2. Ratings
 - a. Current Rating: 0.3A ;
 - b. Operating Temperature: -40° C ~ 85° C;
3. Electrical Requirement:
 - a. LLCR: Excluding Conductor Resistance 10mΩ Max. (Target design value), Contact: 30mΩ Max. changed (Final), Shell: 50mΩ Max. Changed (Final);
 - b. Dielectric Withstanding Voltage: 150V AC (RMS) for 1 minute (Mated), 250V AC (RMS) for 1 minute (Unmated);
 - c. Insulation Resistance: 10MΩ Min. @ 150V DC (Mated), 100MΩ Min. @ 500V DC (Unmated);
4. IR Reflow: the peak temperature on board shall be maintained for 10 seconds at 260±5°C



PIN	Signal Assignment
1	Hot Plug Detect
2	Utility
3	TMDS Data2+
4	TMDS Data2 Shield
5	TMDS Data2-
6	TMDS Data1+
7	TMDS Data1 Shield
8	TMDS Data1-
9	TMDS Data0+
10	TMDS Data0 Shield
11	TMDS Data0-
12	TMDS Clock+
13	TMDS Clock Shield
14	TMDS Clock-
15	CEC
16	DDC/CEC Ground
17	SCL
18	SDA
19	+5V Power

APPROVALS		DATE	http://www.dongdudz.com	
DRAW:	ZRD	2017-12-6	TOLERANCE:	ANGLE:
CHECKED:	***	***	30≥ ±0.30	±2°
APPOVALS:	***	***	10°30 ±0.20	
			5°10 ±0.15	
			≤5 ±0.10	


® 东都电子
DONGDU ELECTRONICS

MODEL:	USB CONNECTOR	
PART NO:	HD1M-TYPE-D-03	
UNIT :mm	SCALE:1:1	
REV:	A	PAGE:1/1