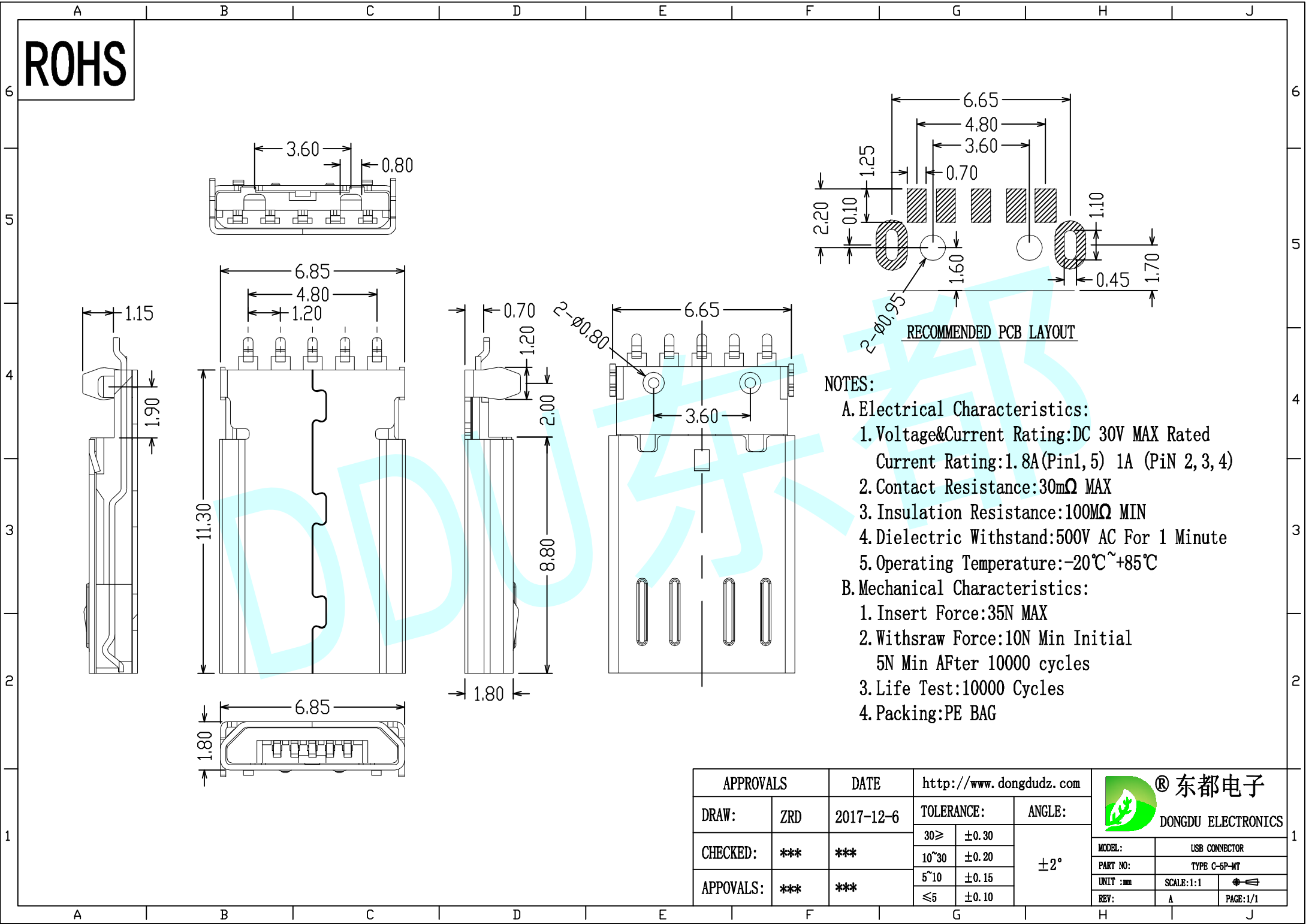


ROHS

6  
5  
4  
3  
2  
1


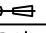
6  
5  
4  
3  
2  
1



**RECOMMENDED PCB LAYOUT**

**NOTES:**

- A. Electrical Characteristics:**
1. Voltage&Current Rating:DC 30V MAX Rated  
Current Rating:1.8A (Pin1, 5) 1A (PiN 2, 3, 4)
  2. Contact Resistance:30mΩ MAX
  3. Insulation Resistance:100MΩ MIN
  4. Dielectric Withstand:500V AC For 1 Minute
  5. Operating Temperature:-20℃~+85℃
- B. Mechanical Characteristics:**
1. Insert Force:35N MAX
  2. Withdraw Force:10N Min Initial  
5N Min AFter 10000 cycles
  3. Life Test:10000 Cycles
  4. Packing:PE BAG

APPROVALS		DATE	http://www.dongdudz.com		 <b>® 东都电子</b> DONGDU ELECTRONICS	
DRAW:	ZRD	2017-12-6	TOLERANCE:	ANGLE:		
CHECKED:	***	***	30≥	±0.30		±2°
APPOVALS:	***	***	10~30	±0.20		
			5~10	±0.15		
			≤5	±0.10	MODEL: USB CONNECTOR PART NO: TYPE C-5P-MT UNIT :mm SCALE:1:1  REV: A PAGE:1/1	

A B C D E F G H J