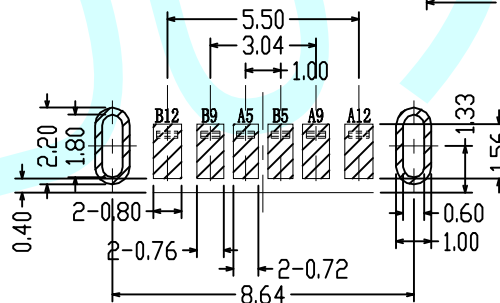
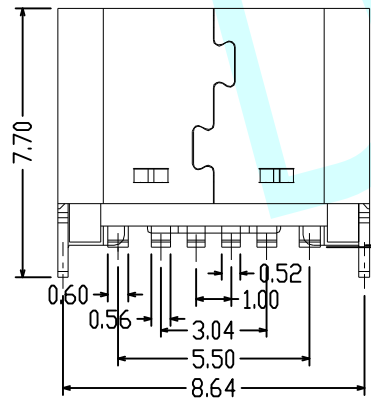
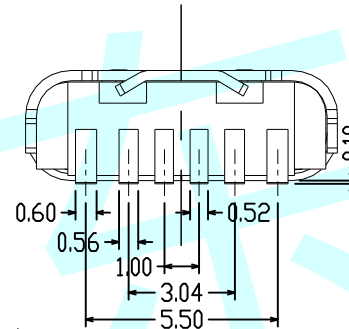
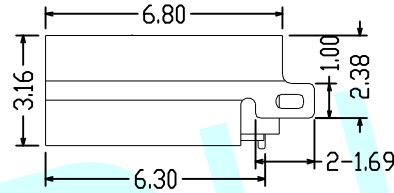
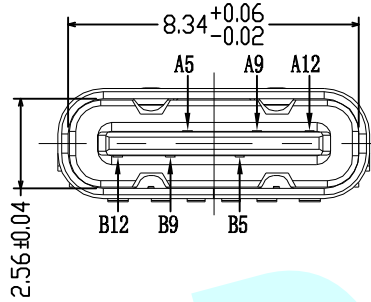
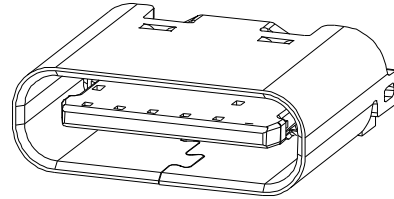
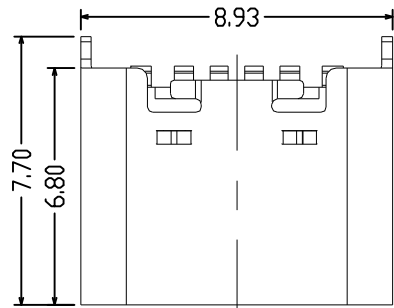


# ROHS



RECOMMENDED PCB LAYOUT  
TOLERANCE UNSPECIFIED ±0.05mm

**NOTE:**

**1. MATERIAL SPECIFICATION:**

- A. HOUSING: HIGH TEMPERATURE RESISTANT PLASTIC, UL94 V-0
- B. CONTACTS: COPPER ALLOY
- C. MID PLATE: STAINLESS STEEL

**2. PLATING SPECIFICATION:**

**A. CONTACTS:**

- Ni 50u" MIN. UNDER PLATED OVER ALL.
- Au PLATED ON THE FUNCTIONAL AREA OF CONTACT.
- (GOLD PLATING THICKNESS FOLLOW THE P/N)

PLATING SPECIFICATIONS OF THE SOLDER AREA FOLLOW THE P/N

**B. FRONT SHELL: SEE TABLE.**

**C. SHIELD PLATE&EMI PLATE: CLEAR ONLY**

**3. MECHANICAL PERFORMANCE:**

- A. INSERTION FORCE: 0.5~2.0kgf.
- B. REMOVAL FORCE: 0.8~2.0kgf
- C. DURABILITY: 5000 CYCLES.

**4. ELECTRICAL PERFORMANCE:**

- A. CURRENT RATING: 3.0A
- VOLTAGE RATING: 5.0V
- B. LLCR:
  - VBUS&GND PINS AND OTHER PINS: 40mΩ/PIN MAX.
  - SHIELD: 50mΩ/MAX
  - LLCR MAX, CHANGE OF ALL PINS: 10mΩ
- C. INSULATION RESISTANCE: 100MΩ MIN
- D. WITHSTAND VOLTAGE: AC 100V FOR 1 MINUTE

**5. ENVIRONMENTAL PERFORMANCE:**

OPERATING TEMPERATURE: -25°C~+85°C

**6. IR REFLOW:**

THE PEAK TEMPERATURE ON THE BOARD SHALL BE MAINTAINED FOR 10 SECONDS AT 260°C

A5	CC1	B12	GND
A9	VBUS	B9	VBUS
A12	GND	B5	CC2
PIN	SIGNAL NAME	PIN	SIGNAL NAME

APPROVALS		DATE	http://www.dongdudz.com	
DRAW:	ZRD	2017-12-6	TOLERANCE:	ANGLE:
			30≥	±0.30
CHECKED:	***	***	10~30	±0.20
			5~10	±0.15
APPOVALS:	***	***	≤5	±0.10
			±2°	
REV:	A	PAGE: 1/1		
MODEL:		USB CONNECTOR		
PART NO:		TYPE C-6PIN-LT-L6.8		