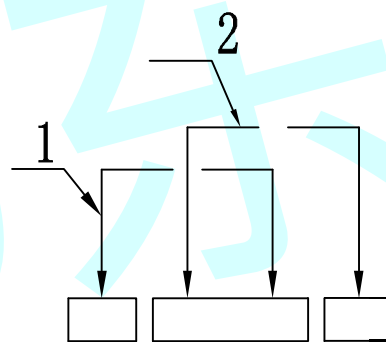
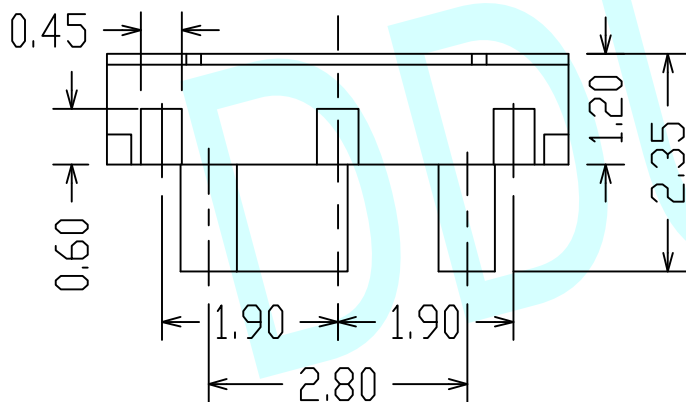
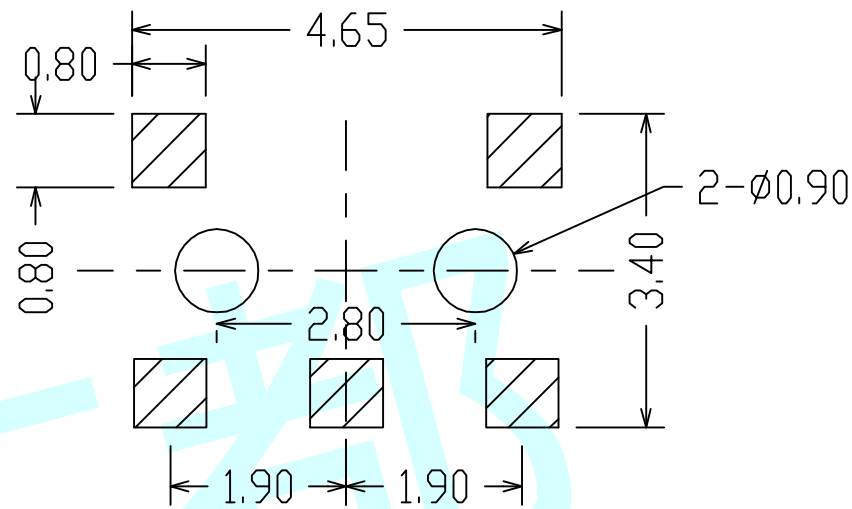
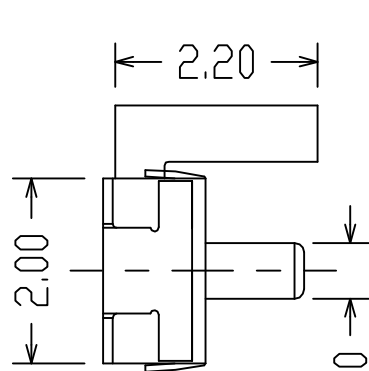
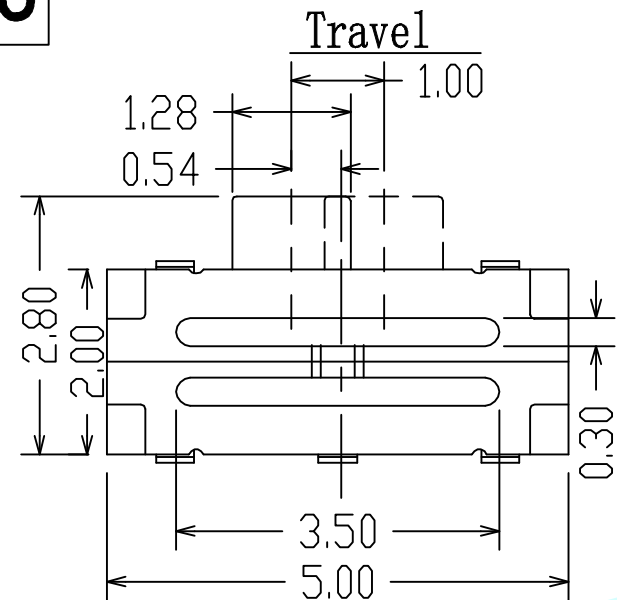


**ROHS**


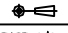


PCB Layout

Schematic (Shorting)

NOTE:

1. Operating Force:  $100 \pm 30$ gf

APPROVALS		DATE	<a href="http://www.dongdudz.com">http://www.dongdudz.com</a>		 <b>® 东都电子</b> DONGDU ELECTRONICS	
DRAW:	ZRD	2017-12-6	TOLERANCE:	ANGLE:		
CHECKED:	***	***	30 $\geq$	$\pm 0.30$		$\pm 2^\circ$
APPOVALS:	***	***	10 $^\circ$ 30	$\pm 0.20$		
			5 $^\circ$ 10	$\pm 0.15$		
			$\leq 5$	$\pm 0.10$		
MODEL:	TOGGLE SWITCHES		UNIT :mm	SCALE:1:1		
PART NO:	DDU-1421S		REV:	A	PAGE:1/1	