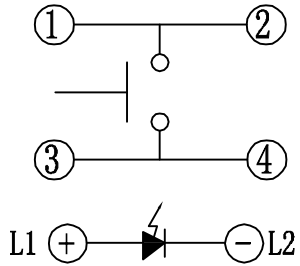
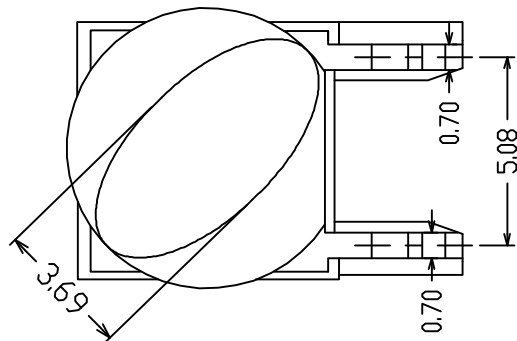
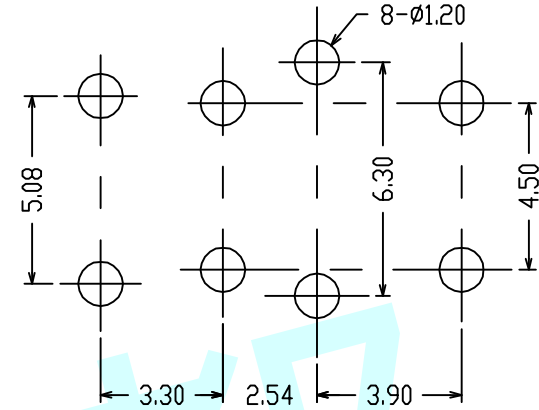


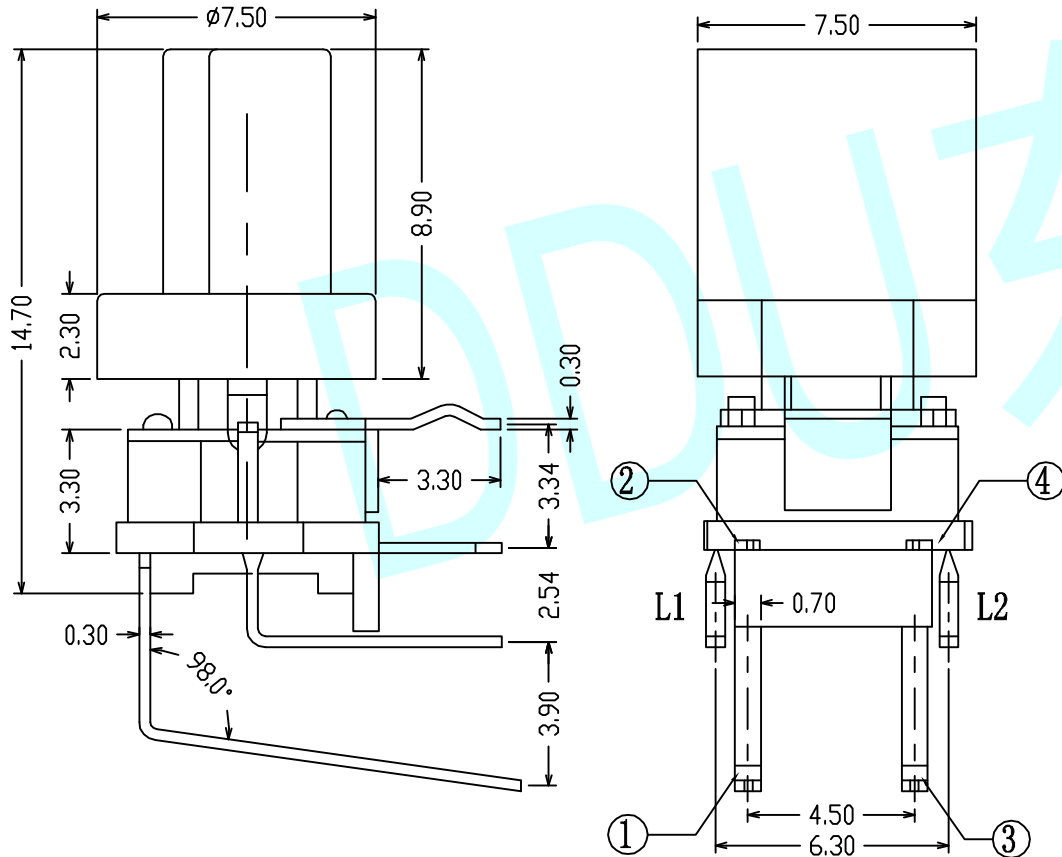
ROHS



Circuit Diagram



PCB Layout (Pattern Side)



NOTES:

1. Rating: 12V DC 50mA
2. Contact Resistance: 100mΩ Max
3. Insulation Resistance: 100MΩ 250V DC FOR 1MIN
4. Dielectric Strength: 250V AC (50/60Hz) FOR 1MIN
5. Life Test: 100,000 Cycles
6. Operation Force: 160±50gf/250±50gf
7. Travel: 0.25±0.10mm
8. Operating temperature range: -20°C~+70°C

LED Colour (LED颜色)	Whiter (白色)	Full Green (翠绿)	Amber (琥珀色)	
	Red (红色)	Yellow (黄色)	Green (绿色)	Blue (蓝色)

APPROVALS		DATE	http://www.dongdudz.com	
DRAW:	ZRD	2017-12-6	TOLERANCE:	ANGLE:
CHECKED:	***	****	30≥ ±0.30	±2°
APPOVALS:	***	****	10~30 ±0.20	
			5~10 ±0.15	
			≤5 ±0.10	



MODBL:	LED Tact Switch
PART NO:	DDU-1517
UNIT :mm	SCALE: 1:1
REV:	A