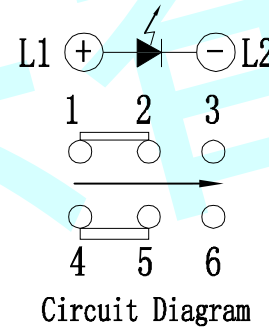
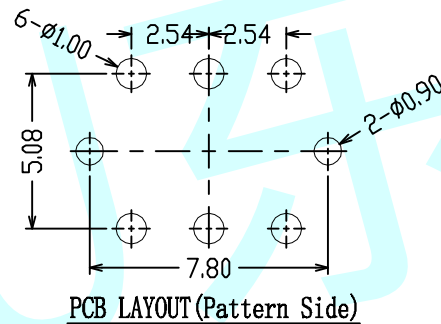
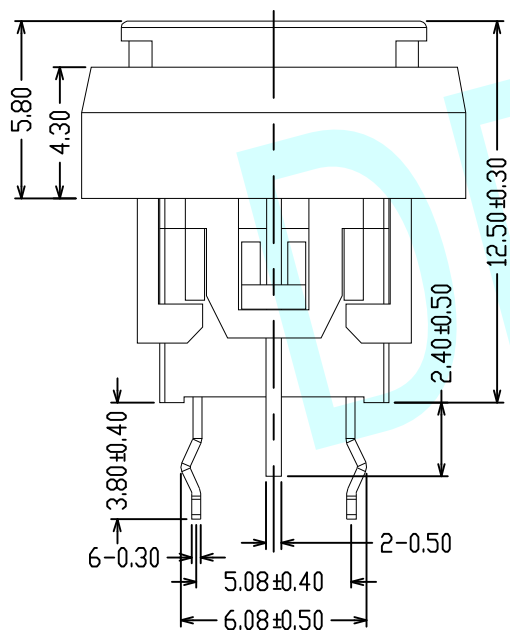
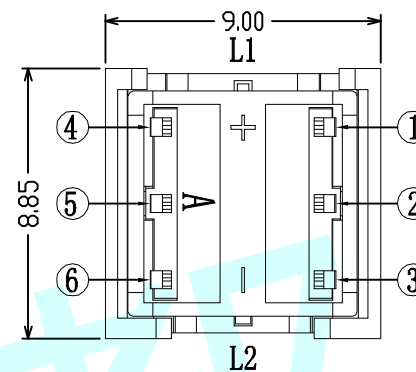
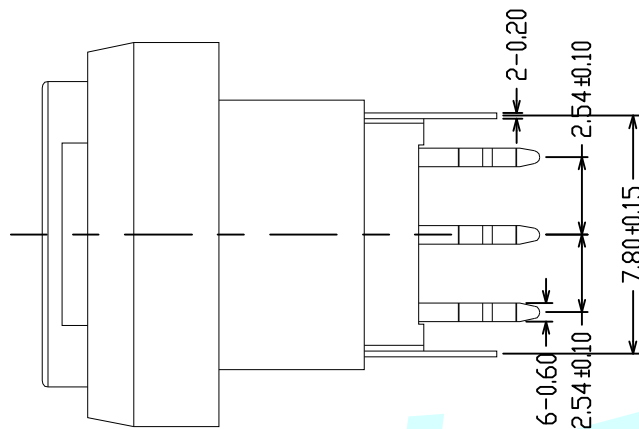
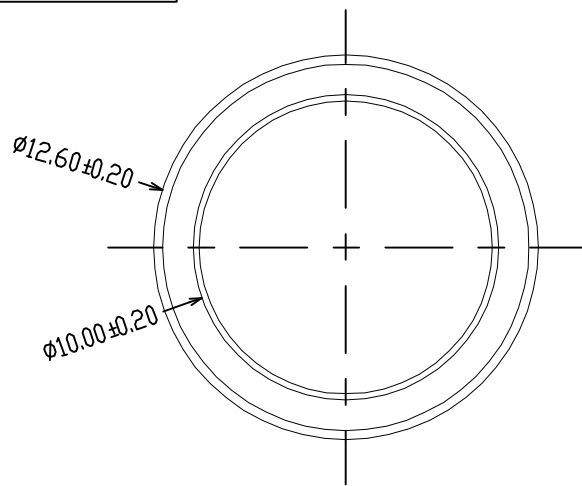


ROHS



NOTES:

1. Rating:12V DC 50mA
2. Contact Resistance:100mΩ Max
3. Insulation resistance:100MΩ Min
4. Dielectric Strength:250V AC(50/60HZ) FOR 1Min
5. Life test:100,000 Cycles
6. Operating temperature range:-20℃~+70℃
7. Operation Force:160±50g/250±50g

Operating Type	Push To Lock(自锁)		Push No Lock(无锁)	
LED Colour (LED颜色)	Whiler(白色)	Red(红色)	Blue(蓝色)	Green(绿色)

APPROVALS		DATE	http://www.dongdudz.com	
DRAW:	ZRD	2017-12-6	TOLERANCE:	ANGLE:
CHECKED:	***	****	30≥ ±0.30	±2°
APPOVALS:	***	****	10~30 ±0.20	
			5~10 ±0.15	
			≤5 ±0.10	
				东都电子 DONGDU ELECTRONICS
				MODBL: LED Tact Switch PART NO: DDU-1534 UNIT :mm SCALE:1:1
				REV: A PAGE:1/1