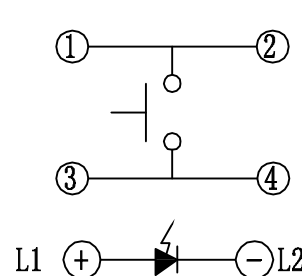
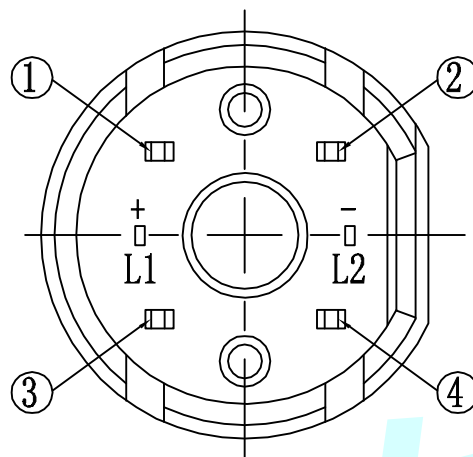
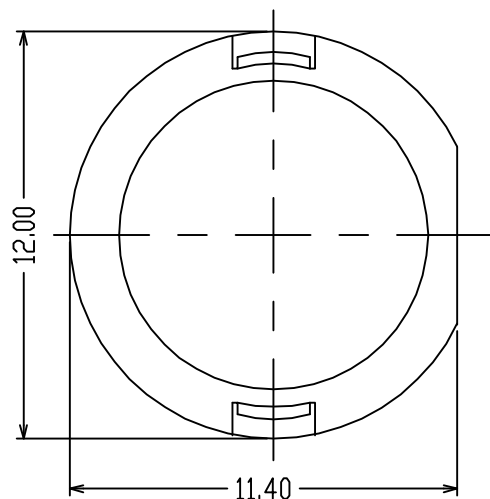
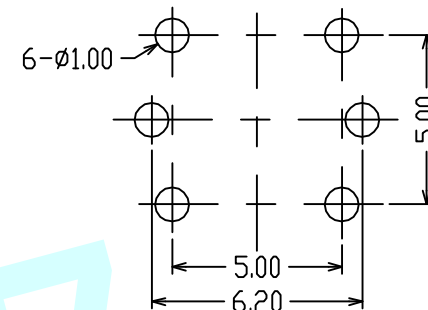


ROHS



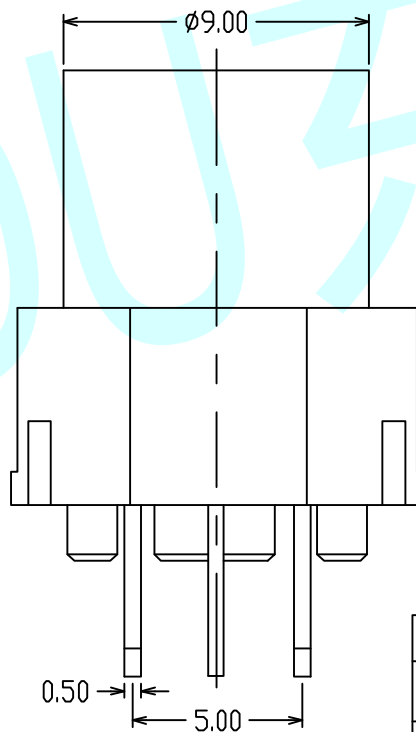
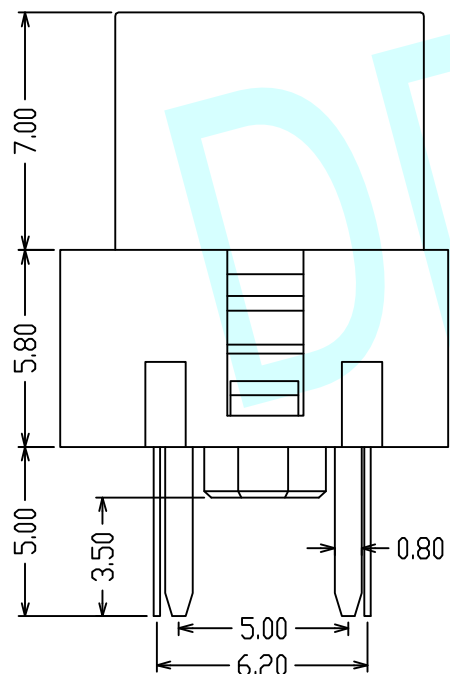
Circuit Diagram





PCB Layout (Pattern Side)

NOTES:

1. Rating: 12V DC 50mA
2. Contact Resistance: 100mΩ Max
3. Insulation Resistance: 100MΩ 250V DC FOR 1MIN
4. Dielectric Strength: 250V AC (50/60Hz) FOR 1MIN
5. Life Test: 100,000 Cycles
6. Operation Force: 160±50gf/250±50gf
7. Travel: 0.25±0.10mm
8. Operating temperature range: -20°C~+70°C



		LED Colour (LED颜色)	Whiler (白色)	Red (红色)	Blue (蓝色)	Green (绿色)
APPROVALS		DATE		http://www.dongdudz.com		
DRAW:	ZRD	2017-12-6		TOLERANCE:	ANGLE:	
CHECKED:	***	****		30°	±0.30	±2°
APPOVALS:	***	****		10°30'	±0.20	
				5°10'	±0.15	
				≤5	±0.10	
				 东都电子 DONGDU ELECTRONICS		
MODBL:		LED Tact Switch				
PART NO:		DDU-1545				
UNIT :mm		SCALE: 1:1				
REV:		A		PAGE: 1/1		