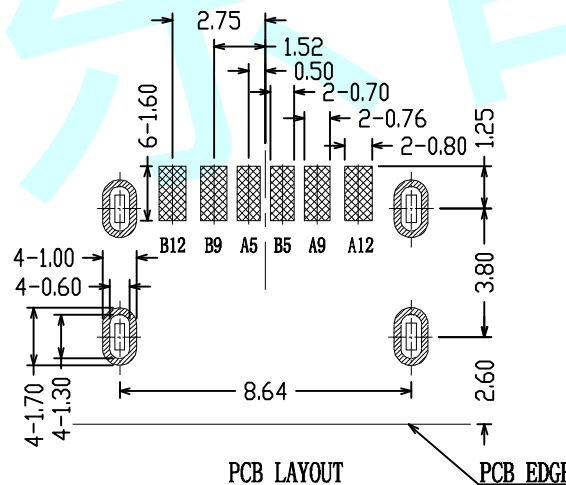
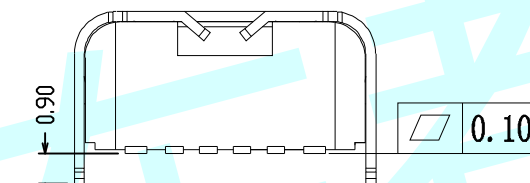
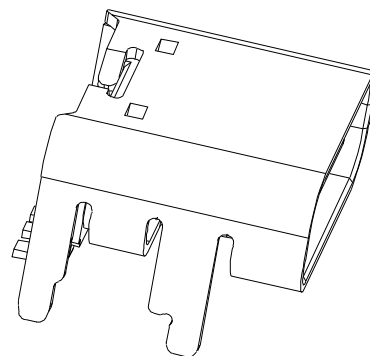
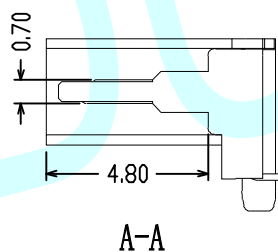
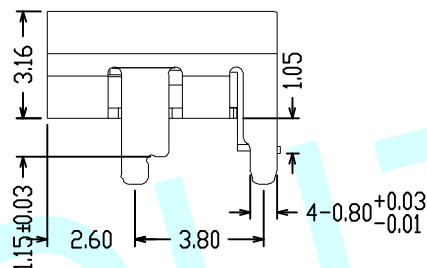
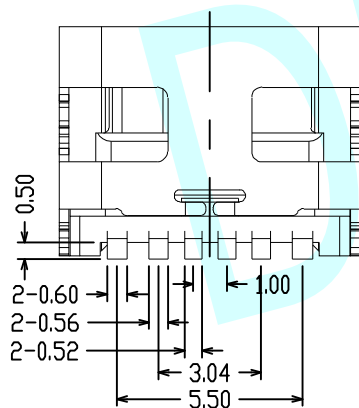
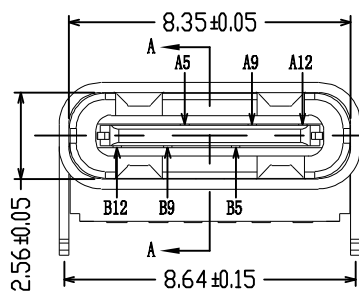
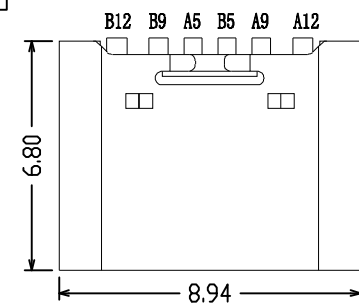


# ROHS



### 技术要求:

#### A. 电气性能:

1. 额定值: 5V 3A/5A
2. 耐电压: AC 500V for 1分钟
3. 接触电阻: 40mΩ max  
可靠性和环境测试后阻抗变化不得超过10mΩ
4. 绝缘电阻: 100MΩ min

#### B. 机械性能:

1. 插入力: 5~20N, 拔出力: 6~20N
2. 寿命测试: 5000/10000 次 max
3. 推力: 50N min
4. 剥离强度: 150N min
5. 扭曲强度: 0.75Nm

#### C. 材质:

1. 胶芯材质: LCP/PA9T
2. 外壳材料: SPCC/C2680/SUS304
3. 端子材质: C2680/C5191/C7025

#### D. 盐雾要求: 24H/48H

#### E. 工作温度: -20℃~+85℃

A5	CC1	B12	GND	APPROVALS		DATE	http://www.dongdudz.com	
A9	VBUS	B9	VBUS	DRAW:	ZRD	2023-12-6	TOLERANCE:	ANGLE:
A12	GND	B5	CC2	CHECKED:	***	***	30≥	±0.30
PIN	SIGNAL NAME	PIN	SIGNAL NAME	APPROVALS:	***	***	10°30	±0.20
							5°10	±0.15
							≤5	±0.10



MODEL:	****
PART NO:	****
UNIT :mm	SCALE:1:1
REV:	A